



Where People and Nature Meet



**CIMENTERIE
NATIONALE®**
PRODUCER OF
اسمنت السبع
AL SABEH CEMENT



www.cimnat.com.lb

**A pioneering ecological, biological and social project
from Cimenterie Nationale**

The Green Belt project is the first of its kind in Lebanon, a three-phase quarry-integration initiative that, when completed, will dedicate vast green areas to be excluded from the exploitation plan for the Cimenterie Nationale quarry. The project has been developed taking into consideration the prevailing biodiversity, natural condition and ecological potential.

The Green Belt anchors Cimenterie Nationale's mantra "When People and Nature Meet" and marks our wider commitment towards Corporate Social Responsibility.

The Green Belt separates the quarry from the neighboring villages, producing a visual and psychological barrier for its inhabitants and reduces the direct impact of Cimenterie Nationale's quarry operational activities.

The first phase of the project, a 68,000 sqm green area in Badbhoun, is made up of a conservation zone, a wet zone, a natural dynamics zone, a recreation zone and an education zone. It was opened to the public in December 2012, and accommodates visitors year-round.

Now in development, the second phase of the project, an 46,422 sqm area in Afsdik, will comprise of windbreakers, a conservation zone, and a natural dynamic zone.



Afsdik windbreakers create a natural and scenic barrier

Two windbreakers, made of rows of cupressus sempervirens trees - known for their durability and long life - have been planted to ensure a cleaner natural environment for the Afsdik community. They reduce the residents' exposure to wind, dust and noise from the quarry operation plant, providing a picturesque barrier.

The first windbreaker is 450 meters long and 5 meters wide, and is planted on specially sourced and freshly fertilized soil. One other windbreaker is also planned, covering an additional 2,500 meters. Maintenance and irrigations of this new green area is being undertaken in partnership with the Afsdik community.

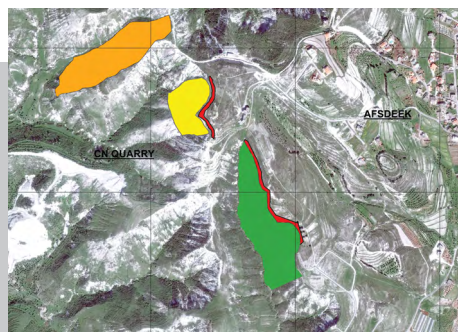
The first ever quarry integration project in Lebanon, innovating on several axes

Conservation & Natural Dynamic

In line with ECOMED's recommendation, various conservation zones have been established to protect existing biodiversity throughout the Green Belt, allowing it to reinforce itself by insuring the perpetual availability of the species and maintaining and developing the ecological functionality of the sites. The biodiversity in these zones is protected with as little intervention as possible, and only slight browsing takes place here. Eco-Med recommended to keep parcel 188, its area 44822m², conserved and untouched due to its richness in biodiversity so as to keep its natural dynamic.

Water Access

Ponds filled with water have been installed to attract species preferring a humid environment. These have been positioned on flat land and are replenished naturally by rainwater in the wet seasons.



Green Belt Phase 2

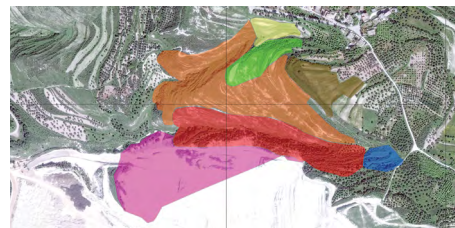
- Conservation/Natural Dynamic Zones
- Recreation & Educational Zone
- Windbreaker Zone 1
- Windbreaker Zone 2
- Parcel 188

Education

An education zone was also created to inform visitors about the natural species growing in the Green Belt. This zone incorporates a wide variety of new trees that grow in similar conditions to those already available onsite, with explanatory signs.

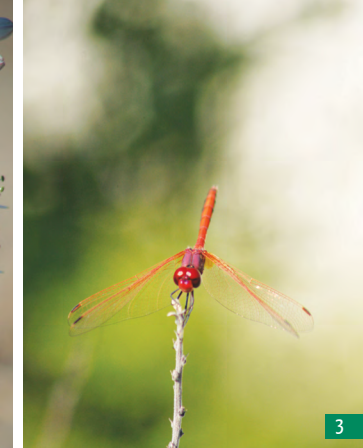
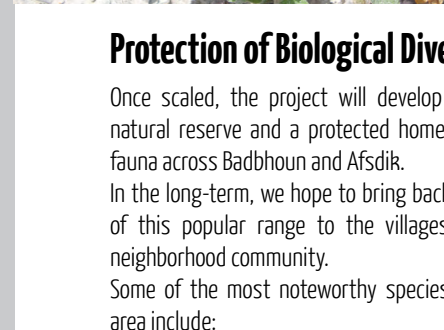
Recreation

An interactive and recreational zone has been built in the Green Belt in Badbhoun. A track lined with aromatic plants ensures easy access to this zone, and shaded benches have been installed to make your visit more comfortable.



Green Belt Phase 1

- Conservation Zone
- Natural Dynamics Zone
- Recreational Zone
- Educational Zone
- Wet Zone
- Rehabilitation Zone
- Extension Zone



- 1 • Scorpion
- 2 • Urginea maritima
- 3 • Symetrum Sanguineum (libellule rouge-sang)
- 4 • Rubus Hedycarpus
- 5 • Cistus Creticus (Ciste de Crête)
- 6 • Erinaceus concolor (Herisson)
- 7 • Perdrix

Protection of Biological Diversity

Once scaled, the project will develop into a major natural reserve and a protected home for flora and fauna across Badbhoun and Afsdik.

In the long-term, we hope to bring back the heritage of this popular range to the villages and greater neighborhood community.

Some of the most noteworthy species living in the area include:

9 ORCHIDS AMONG THE NOTEWORTHY FLORA SPECIES

INSECTS

MORE THAN 30 SPECIES OF ARTHROPODS

33 SPECIES OF BIRDS

MORE THAN 13 SPECIES OF REPTILES

2 SPECIES OF AMPHIBIANS

Community Building

The Green Belt has been developed in consideration of the local Badbhoun and Afsdik communities' recommendations and needs which will also benefit all neighboring villages. Cimenterie Nationale has worked closely with the region's individuals and municipalities to deliver on their expectations and suggestions as well as to address their concerns.



Communities' expectations & suggestions

- Reduction of the dust and noise from quarrying
- Implementation of a visual "barrier" between the extraction site and the surrounding villages
- Foresee recreational area(s) within the green belt
- Planting species of economic value with benefits to the locals, and fast-growing trees
- Generating employment

Expectations & suggestions

- Include, if possible, in phase 3 of the green belt private lands with prior authorization from corresponding landowners
- Raise public awareness on the green belt concept (to avoid expectation of forest)
- Include surrounding municipalities in the Promotion strategy for the green belt to allow follow up, better visibility and accountability



Communities' fears

- Extension of the extraction site towards the villages
- Long-term commitment of the Cement plant

Local decision-makers' fears

- Expansion of the extraction site towards the villages, mainly Afsdik
- Long-term commitment of the Cement plant once raw material are fully exploited in the extraction site



Behind the Project

Cimenterie Nationale

Founded in 1953, Cimenterie Nationale is today a leader in the Lebanese cement industry. Economic development, job creation, and environmental safeguarding are key priorities in the company's pledge to ensure the communities in which it operates reach their full potential. Our Environmental Management System aims to conserve natural resources through production optimization, to maximize recycling, to minimize waste and to rehabilitate exploited areas.

The Green Belt was born out of Cimenterie Nationale's passion for the environment and neighborhood community. Cimenterie Nationale has recently become a member of the Cement Sustainability Initiative (CSI), which comes hand in hand with its aspiration to develop a sustainable community project with substantial ecological, social and economic benefits for all.

Neighborhood Community

The project has been developed in close partnership with the surrounding villages of Badbhoun and Afsdik, taking into account citizen recommendations made through frequent round-table discussions.

ECO-MED

Complying with national and international environmental standards, ECO-MED, experts in environmental development, evaluated the potential of the land, conducted studies on the ecological biodiversity of the project.

T.E.R.R.E. Liban

An independent Lebanese non-governmental organization devoted to the creation and implementation of environmental education within Lebanon, T.E.R.R.E. Liban is overseeing the planning and implementation of Green Belt Phase 2.

The Green Belt:

General Overview



Schedule a Visit



The Green Belt welcomes eco-tourists, hikers, schools and university groups throughout the year.

To schedule a visit, please contact us on
Tel: 961 6 542120/30/40
cncsr@cimnat.com.lb